

5/8-11 THREAD x 1-1/8 DEEP
C'BORE DIA .642 x .300 DEEP

PRECISION GROUND
FOR DUAL CONTACT FIT

Ø 1.75

Ø 2.50

Ø 1.48

Ø 1.25

.700

.25

LOCK SCREW

Ø .7499

SAW CAP

SAW GOES HERE

2.70

.65

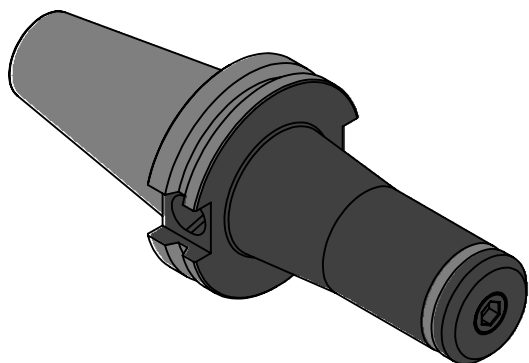
0

.04

.75

2.05

3.50



NOTES:

WORKS ON ALL CAT40 MACHINES WITH DUAL CONTACT SPINDLES

COMPATIBLE WITH BIG-PLUS® SPINDLES

LOCK SCREW 1/4-28 x 1-1/4 SHCS (INCLUDED)

SAW CAP IS 1/4 THICK AND .7499 DIAMETER BOSS IS .700 LONG (INCLUDED)

FOR MORE PRODUCT DETAILS PLEASE GO TO MARITOO.COM

AND SEARCH ITEM # LISTED ON THIS PRINT

MARITOO

WWW.MARITOO.COM

ITEM# **CAT40 SSA.750-3.5DT**

Made in USA